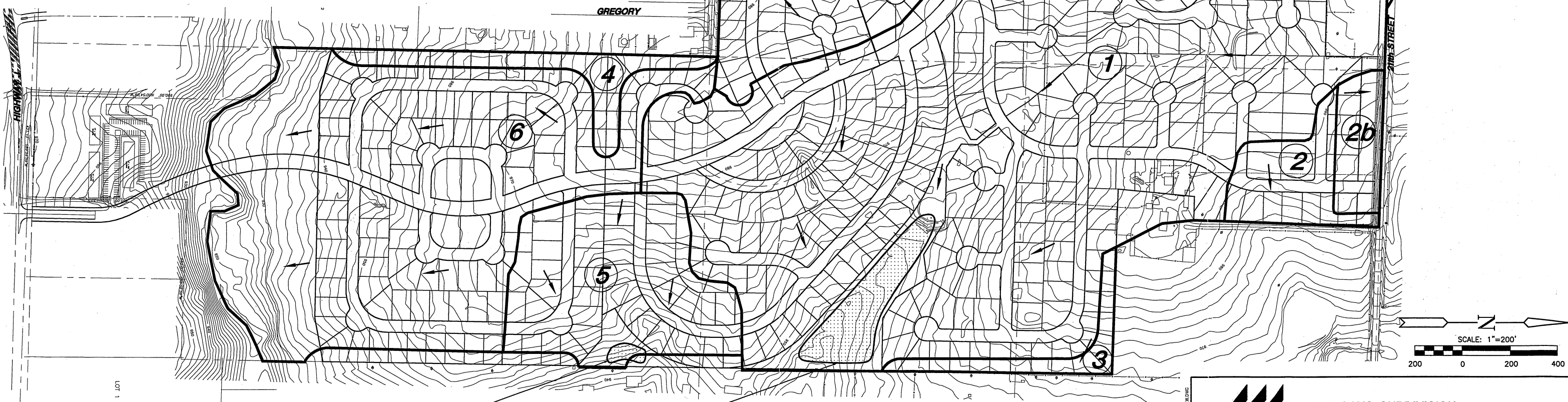
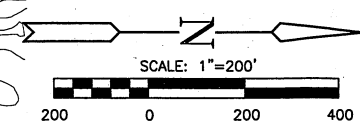



VICINITY MAP
N.T.S.



APPROXIMATE PROPOSED DETENTION POND

APPROXIMATE PROPOSED DETENTION POND





MKEC
ENGINEERING
CONSULTANTS

25 CORPORATE WOODS, SUITE 800
DUBLIN, GA 31009
404-261-9390

TWIN OAKS SUBDIVISION
PROJECT NAME

PROPOSED DRAINAGE BASINS
SHEET TITLE

<p><i>BSH</i> DESIGN BY:</p> <p>2004 DATE</p>	<p><i>JAS</i> DRAWN BY:</p> <p>04076 JOB NO.</p>	<p><i>ASH</i> CHECKED BY:</p> <p>1 / 1 SHEET/OF</p>
---	--	---