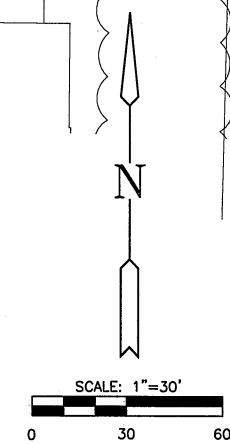
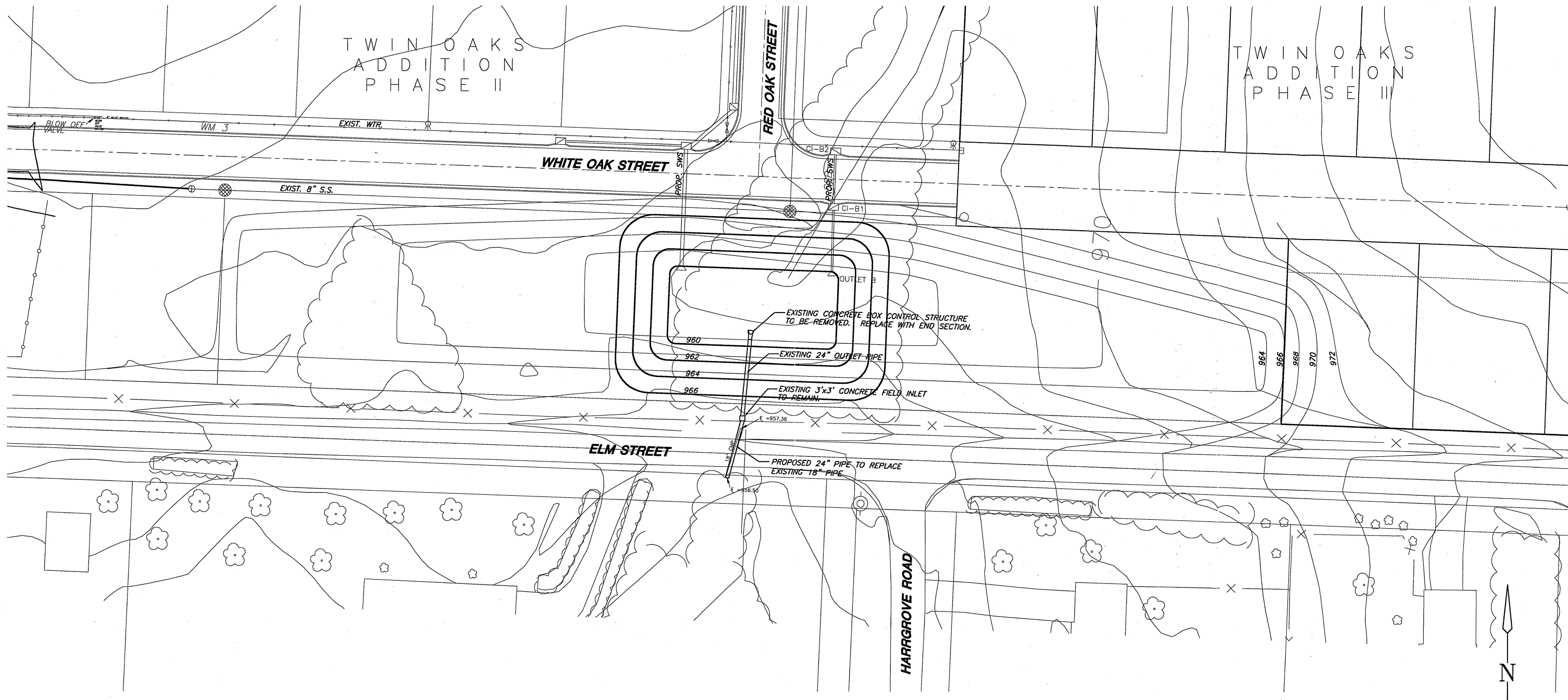



TWIN OAKS
ADDITION
PHASE II

TWIN OAKS
ADDITION
PHASE II



NOTE:
POND AREA, CONTOURS, AND BOX/PIPE LOCATIONS
ARE APPROXIMATE. NOT INTENDED FOR CONSTRUCTION.

 MKEC ENGINEERING CONSULTANTS <small>75 CORPORATE WOODS, SUITE 500 10800 FALEY OVELAND PARK, 568810 913 - 317 - 9390</small>	TWIN OAKS ADDITION PHASE II		
	PROJECT NAME		
	PROPOSED DETENTION FACILITY		
	SHEET TITLE		
	BSH	JAH	BSH
DESIGN BY:	DRAWN BY:	CHECKED BY:	
MARCH 2004	04076	1 / 1	
DATE	JOB NO.	SHEET/OF	