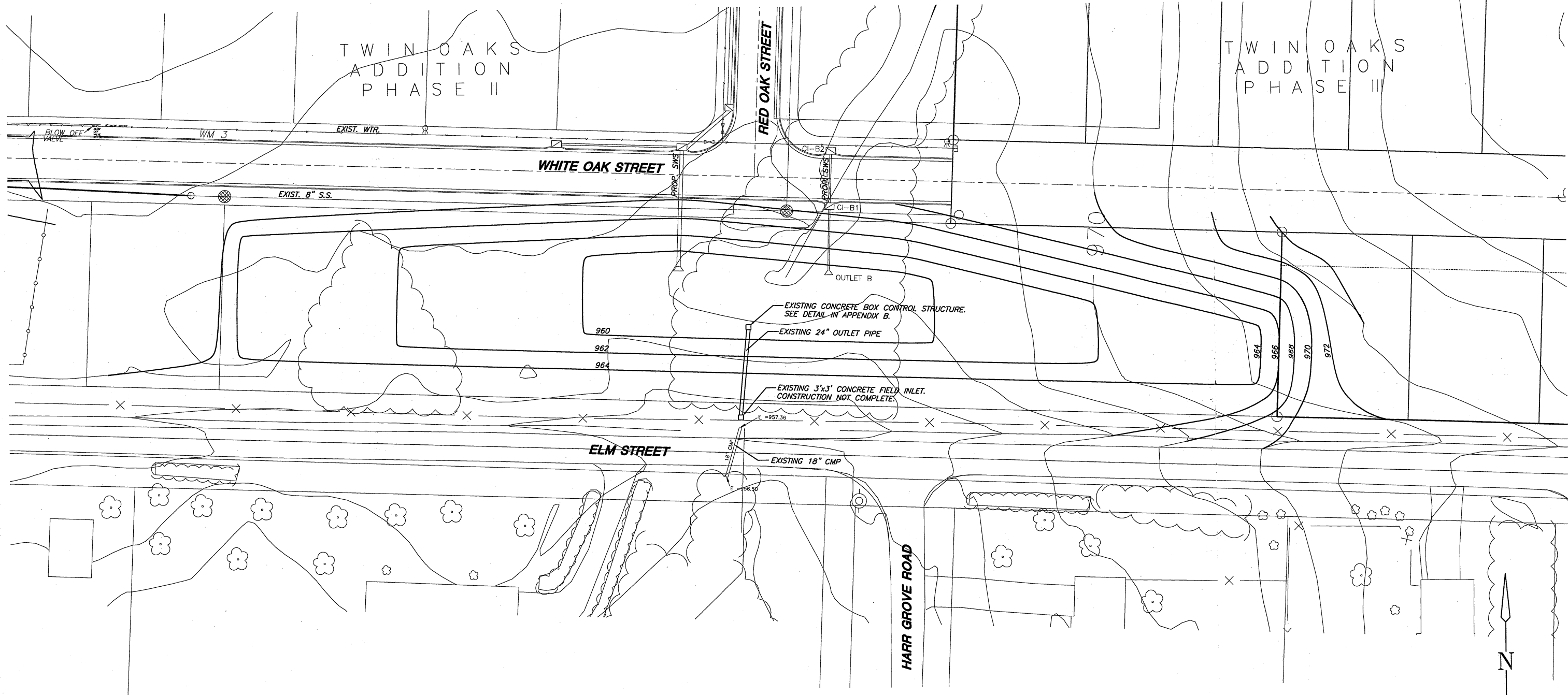


TWIN OAKS
ADDITION
PHASE II

TWIN OAKS
ADDITION
PHASE II



NOTE:
POND AREA, CONTOURS, AND BOX/PIPE LOCATIONS
ARE APPROXIMATE AND DO NOT REPRESENT
CONSTRUCTION OR AS-BUILT INFORMATION. FACILITY
IS CURRENTLY IN THE CONSTRUCTION PROCESS.

<p>MKEC ENGINEERING CONSULTANTS 75 CORPORATE WOODS, SUITE 200 10800 FALETT OVERLAND PARK, KS 66210 913-317-9390</p>	TWIN OAKS ADDITION PHASE II		
	PROJECT NAME		
	EXISTING DETENTION FACILITY		
	SHEET TITLE		
	DESIGN BY: BSH	DRAWN BY: JAH	CHECKED BY: BSH
DATE MARCH 2004	JOB NO. 04076	SHEET/OF 1 / 1	